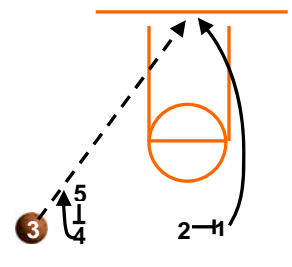
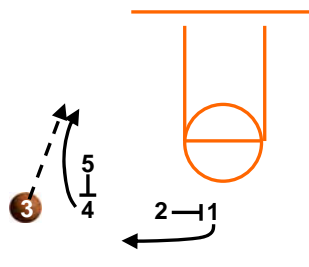
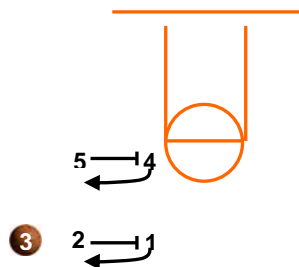
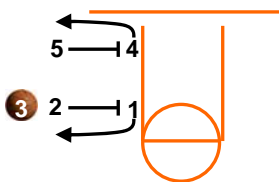
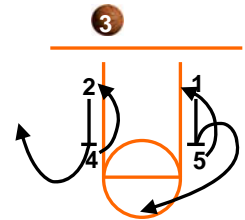
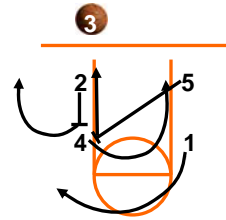
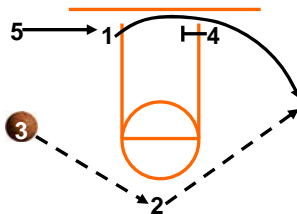
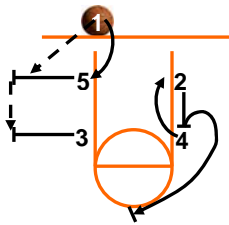
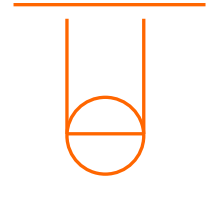
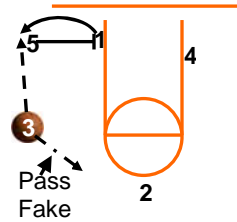
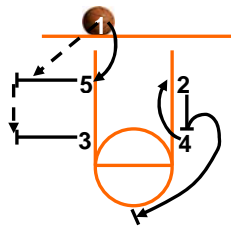
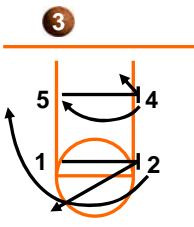
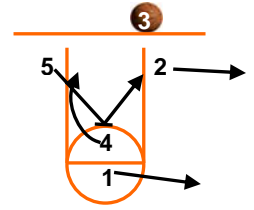
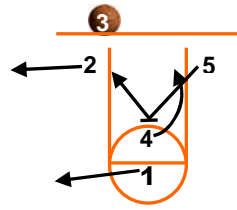
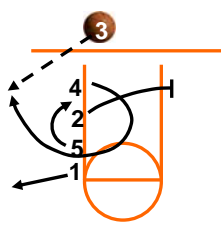
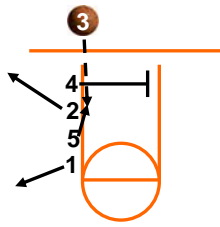


AVCSS SPORTS CLUB, LLC - INBOUNDS PLAYS: CHEAT SHEET



Coach's Notes:

There are many variables involved in selecting an Inbounds play during a game. "Scout your Opponent." Does your opponent have tall players, shorter players, are they playing a defense that is spread out (leaving gaps, creating opportunities for your team), are they playing Man-to-Man? Pay attention to details (what works, what consistently does not), take notes, and make sure that you spend some time scoping out what works for other teams also. Coaches that spend time on the "small things" can give their team an "edge" over their opponents.